



# GAT MONTHLY MEMBERSHIP PROGRESS REPORT

Results as of: 5/31/2023

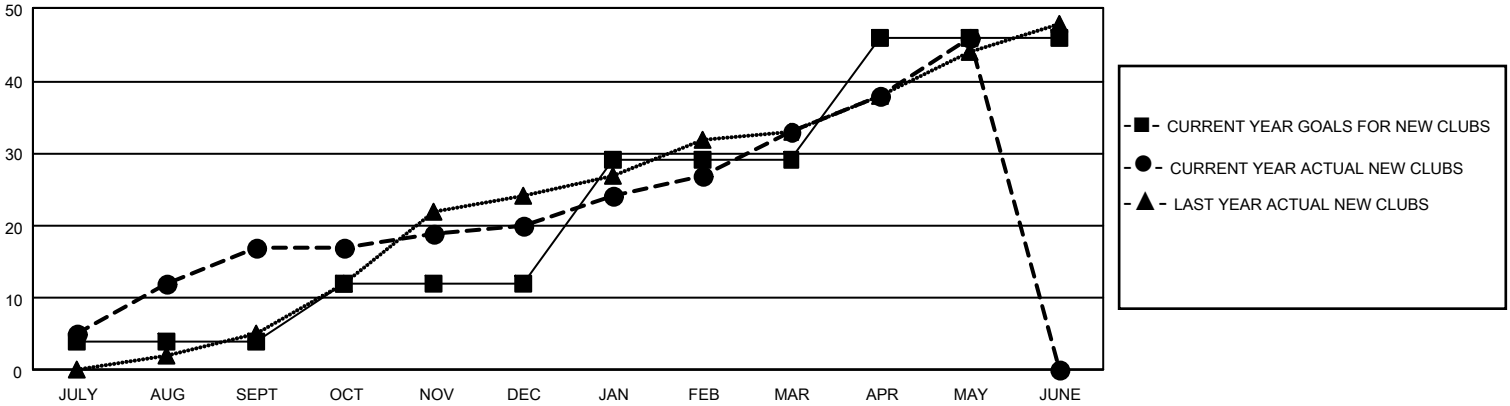
## GAT Constitutional Area 7

REPORT DOES NOT INCLUDE CLUBS IN UNDISTRICTED AREAS.

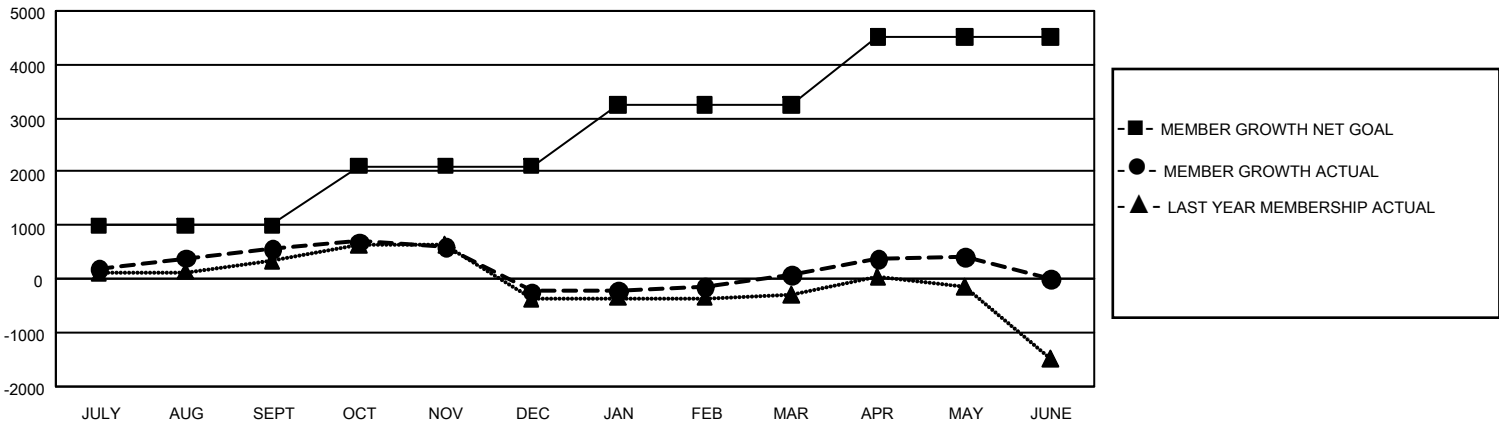
Clubs			
RESULTS FOR 2022-2023			
QUARTER	NEW CLUB GOAL	NEW CLUBS	DROPPED CLUBS
JULY/AUG/SEPT	12	17	13
OCT/NOV/DEC	24	3	15
JAN/FEB/MAR	51	13	2
APR/MAY/JUNE	51	13	4

Members			
RESULTS FOR 2022-2023			
QUARTER	MEMBER GROWTH NET GOAL	MEMBER GROWTH ACTUAL	DROPPED MEMBERS ACTUAL (including transfers)
JULY/AUG/SEPT	996	1,894	990
OCT/NOV/DEC	1105	1,218	1,881
JAN/FEB/MAR	1149	1,442	1,007
APR/MAY/JUNE	1270	1,446	978

GOALS AND ACTUAL NEW CLUBS CUMULATIVE



GOALS AND ACTUAL MEMBERS CUMULATIVE



DROPPED CLUBS: 34	
<b>DROPPED MEMBERS</b>	
DECEASED	496
CLUB CANCELLED	140
OTHER	4,224
<b>TOTAL</b>	<b>4,860</b>

1,199 CLUBS OF 1,889 ADDED 1 OR MORE NEW MEMBERS

[CLICK HERE FOR CUMULATIVE MEMBERSHIP DATA](#)

GENDER DISTRIBUTION	
MALE	24,690 (57.60%)
FEMALE	18,159 (42.36%)
NON BINARY	6 (0.01%)
PREFER NOT TO ANSWER	11 (0.03%)
<b>TOTAL FAMILY UNIT MEMBERS</b>	<b>7,366</b>
<b>FAMILY MEMBERS PAYING HALF DUES</b>	<b>3,981</b>